

# LEFT BANK



## BRASSERIE

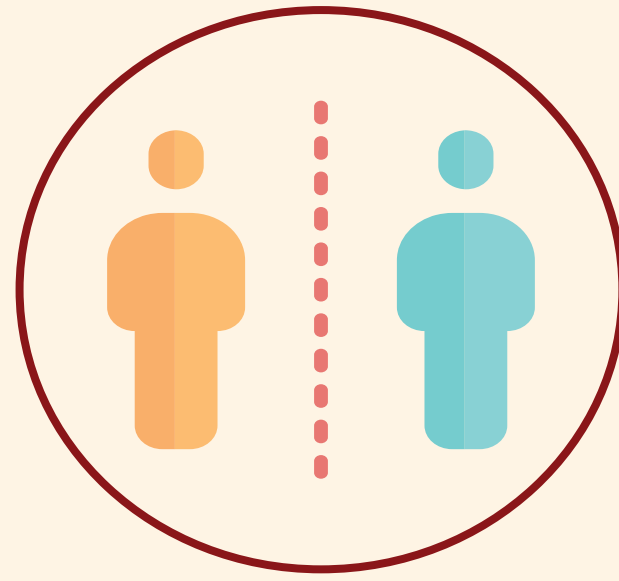
THANK YOU FOR JOINING US!

IN AN EFFORT TO KEEP OUR COMMUNITY SAFE, WE ARE IMPLEMENTING THE BELOW SAFETY MEASURES FOR ALL OUR GUESTS AND STAFF. PLEASE ASK FOR A MANAGER IF YOU HAVE ANY QUESTIONS OR CONCERNS.

### OUR PLEDGE TO YOU



EMPLOYEE HEALTH



SOCIAL DISTANCING



SANITIZER STATIONS



SINGLE USE MENUS



FACIAL COVERINGS



HAND SAFETY



ENHANCED  
SANITIZING AND  
DISINFECTING

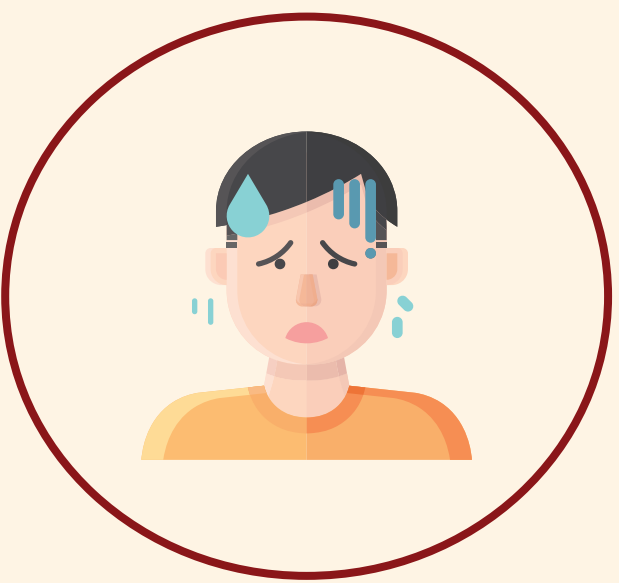


TRAINING AND  
STRICT FOOD  
SAFETY GUIDELINES



PICK UP  
AND DELIVERY  
OPTIONS

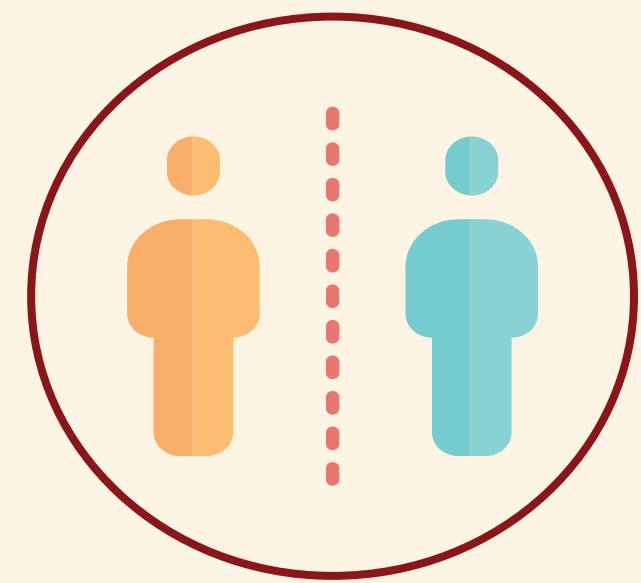
### WHAT WE ASK OF YOU



STAY HOME IF  
FEELING UNWELL



RESERVATIONS  
RECOMMENDED



SOCIAL DISTANCING  
GUIDELINES



CONTACT TRACING  
INFORMATION



PROTECTIVE  
FACIAL COVERINGS